

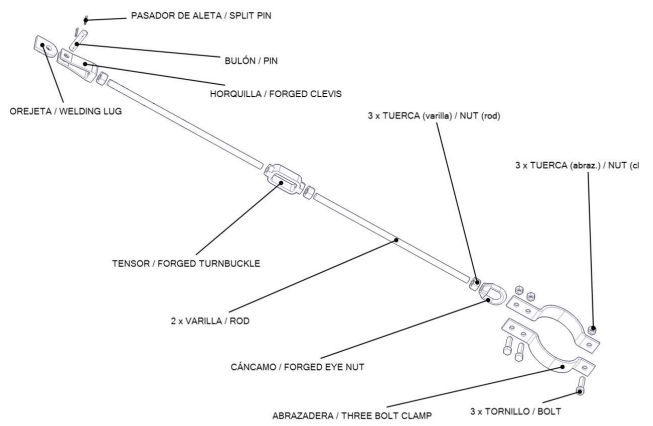


## ***RIGID HANGERS ASSEMBLY GUIDE***

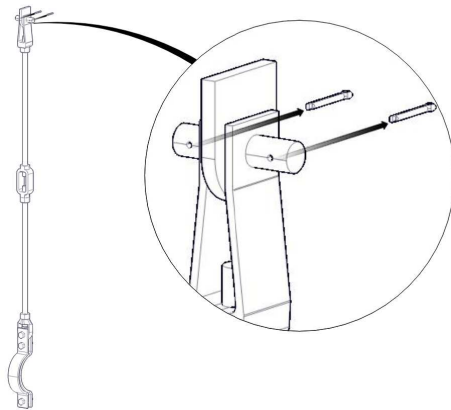
There are different configurations of rigid hangers. This guide explains the assembly of a standard one.



If the pipe size is not large, the hanger will be sent pre-assembled.

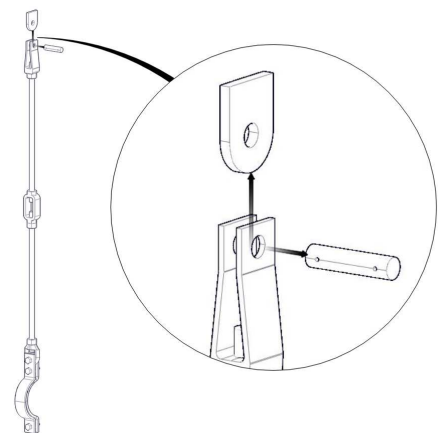


Firstly you must disassemble the hanger following the next steps:

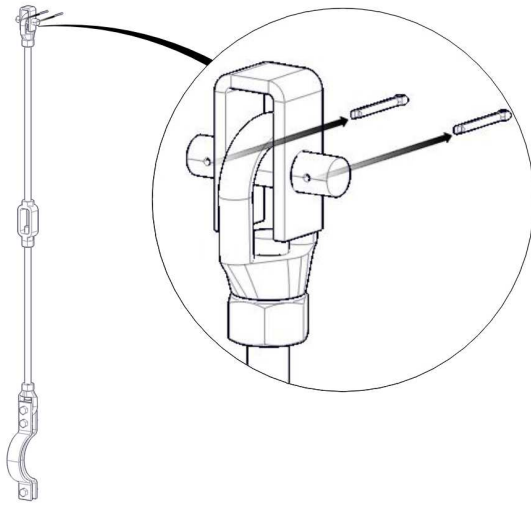


Take the split pins off the upper pin.

Remove the pin and the welding lug.

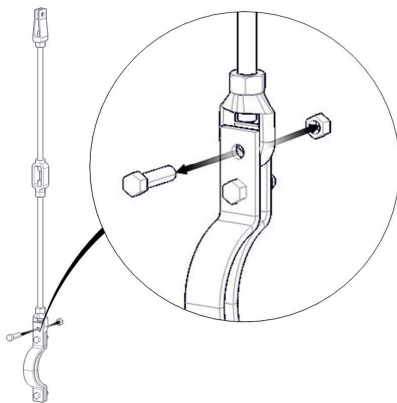
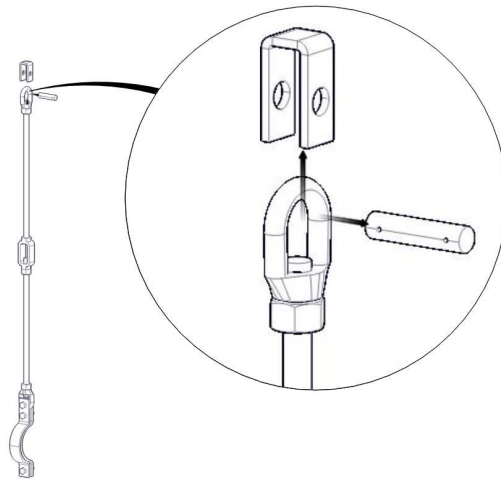


0	09/04/12	INFORMATION	JCC	JMD	
REV.	DATE	EDITED FOR	DRAW	CHECK	



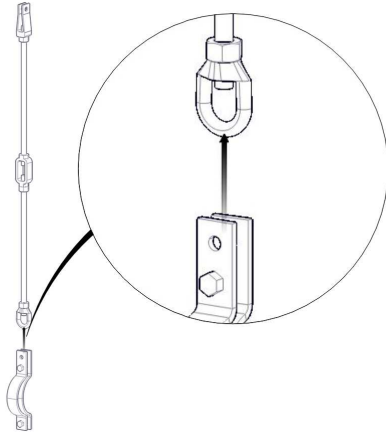
As it is said at the beginning of the guide, there are different configurations of rigid hangers, so it is possible that the upper connection is made by a forged eye nut plus a beam attachment. Any way, the steps to follow are the same. Take the split pins off the upper pin.

Remove the pin and the beam attachment.



Unscrew the three bolt clamp upper screw and nut.

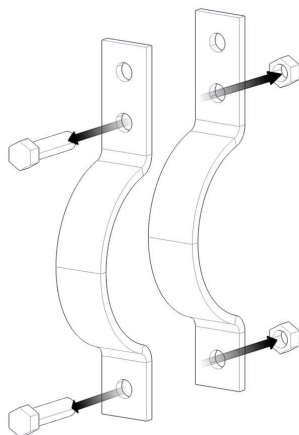
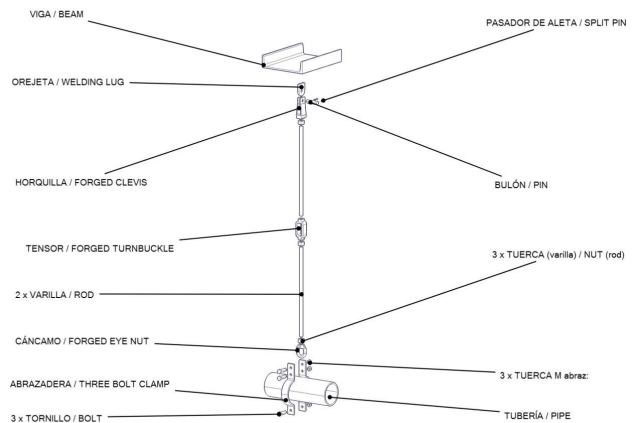
0	09/04/12	INFORMATION	JCC	JMD	
REV.	DATE	EDITED FOR	DRAW	CHECK	



Disassemble the pipe clamp.

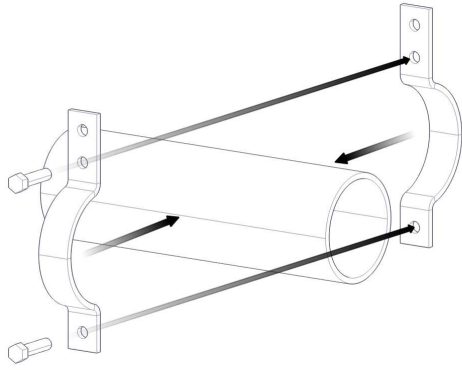
Adjust the length of the assembly having into account that the rods must be fully screwed into the forged clevis / forged eye nut, forged turnbuckle and forged eye nut.

You must find where to place the hanger following the engineering drawings. A misalignment can be shown in the drawings.



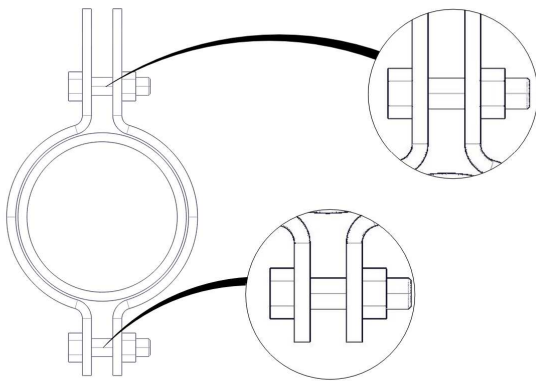
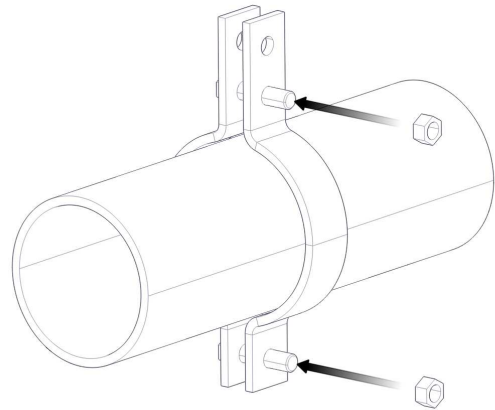
Unscrew the remaining three bolt clamp screws and nuts.

0	09/04/12	INFORMATION	JCC	JMD	
REV.	DATE	EDITED FOR	DRAW	CHECK	



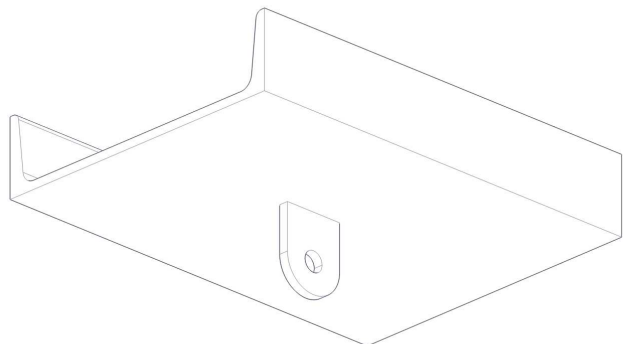
And place the set on the pipe.

Screw the nuts.

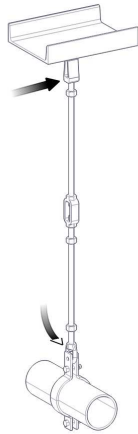


Make sure that the tightening on both sides is about the same.

Weld the lug / beam attachment in the right place following the engineering drawings.

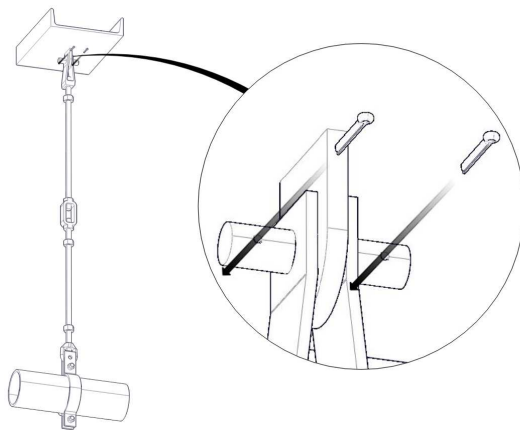
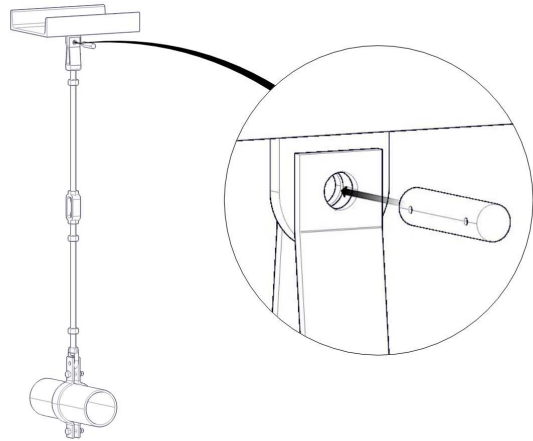


0	09/04/12	INFORMATION	JCC	JMD	
REV.	DATE	EDITED FOR	DRAW	CHECK	



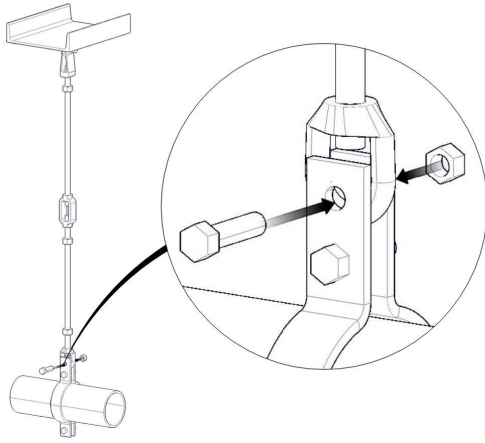
Assemble the set: forged clevis / forged eye nut, rods, nuts, and forged eye nut and adjust the rods length if it is necessary.

Once the holes are concentric, insert the pin.



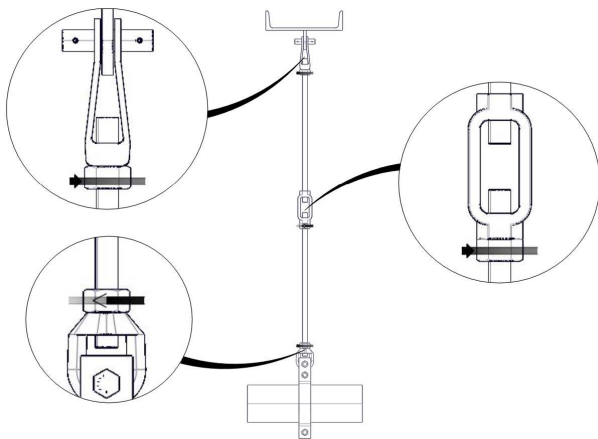
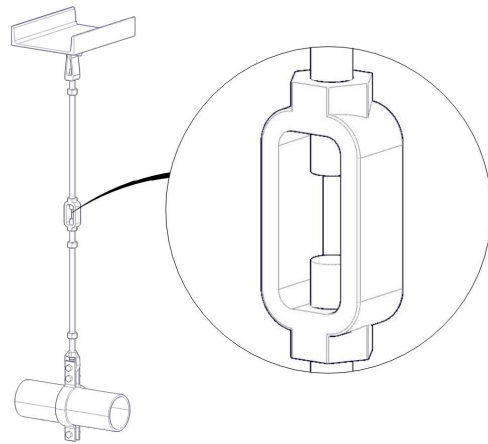
Insert the split pins and open their ends.

0	09/04/12	INFORMATION	JCC	JMD
REV.	DATE	EDITED FOR	DRAW	CHECK



Screw the three bolt clamp upper screw and nut.

Tense the hanger using the forged turnbuckle (or using the rod if there is no turnbuckle).



Screw tightly the check nuts and make sure that the rods are fully screwed into the joining parts.

0	09/04/12	INFORMATION	JCC	JMD	
REV.	DATE	EDITED FOR	DRAW	CHECK	