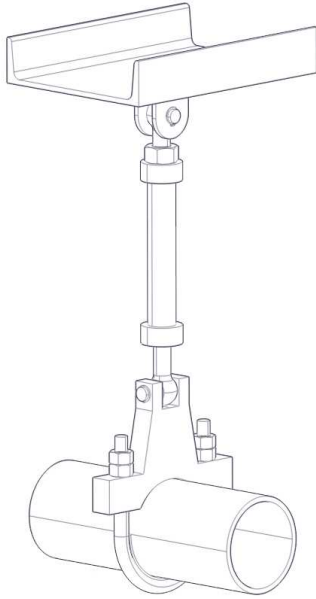
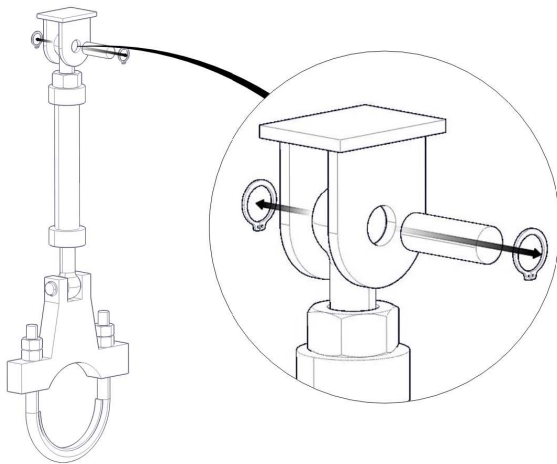
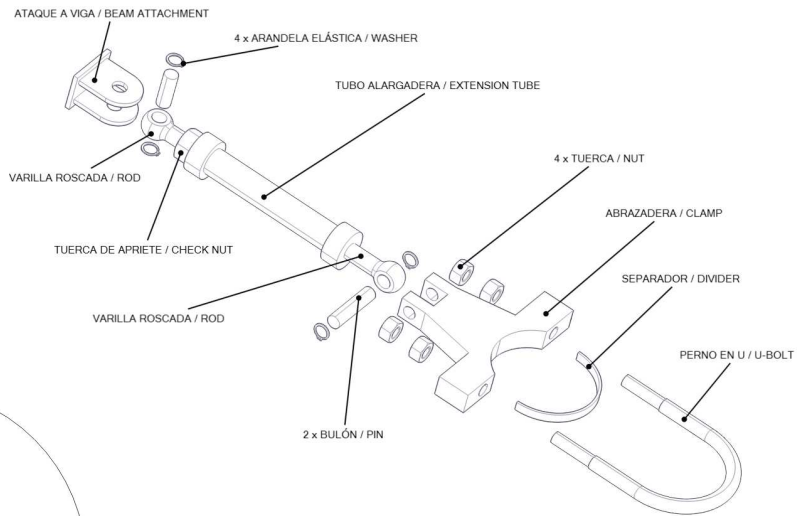




SWAY STRUT ASSEMBLY GUIDE

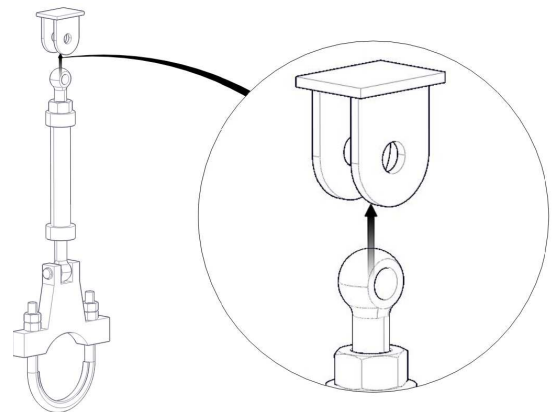


There are different types of sway struts (options 1, 1-A, 2, and 3) depending on different kind of accessories. This guide explains the assembly of a standard sway strut. If the pipe size is not large, the sway strut will be sent pre-assembled. Follow the next steps in order to dismantle the set.

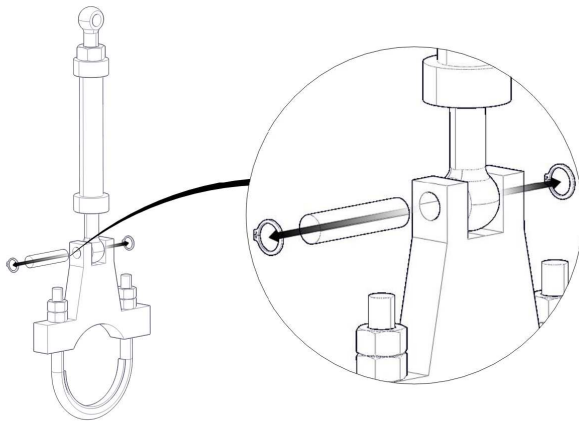


Remove the upper pin and the washers.

Take the beam attachment off.

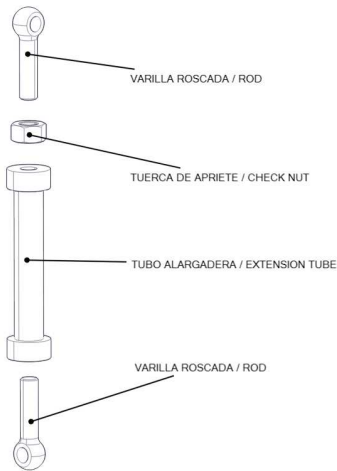
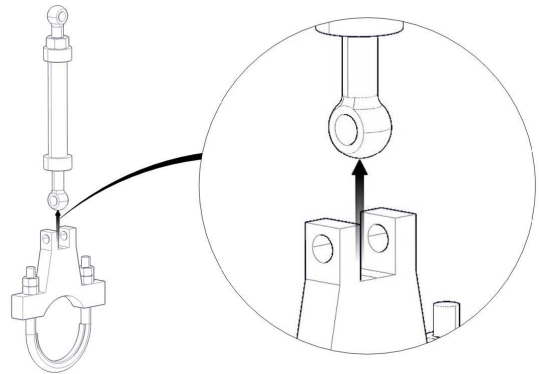


0	09/04/12	INFORMATION	JCC	JMD	
REV.	DATE	EDITED FOR	DRAW	CHECK	



Remove the lower pin and the washers.

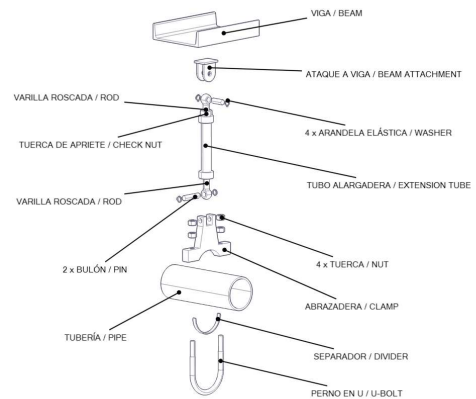
Remove the set: extension tube, rods and check washer.



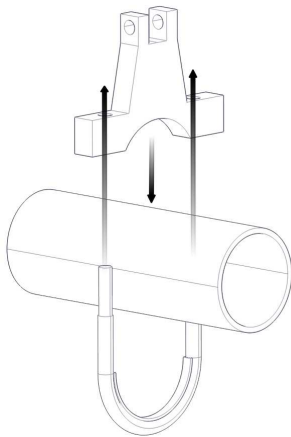
Adjust the length of the assembly, following the next requirements:

- The rods must thread the same length at both ends of the extension tube.
- The dimension between holes should be the same as the indicated in the engineering drawings.

You must find where to place the sway strut following the engineering drawings.

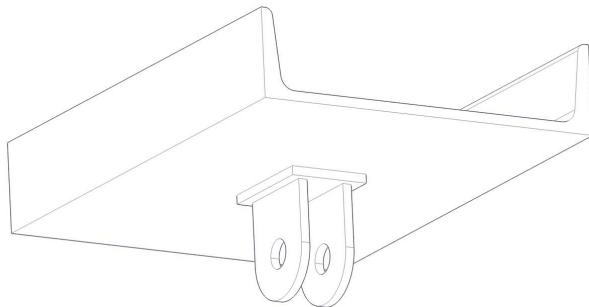
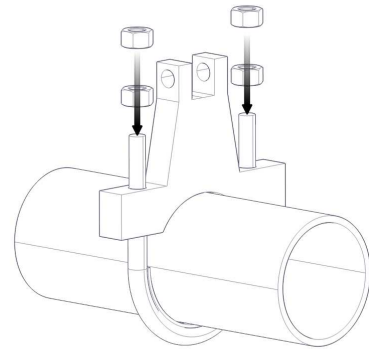


0	09/04/12	INFORMATION	JCC	JMD	
REV.	DATE	EDITED FOR	DRAW	CHECK	



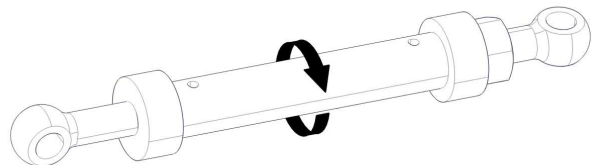
Place the clamp on the pipe. Be careful adjusting the divider, it must lean steady on the pipe.

Screw tightly the nuts.



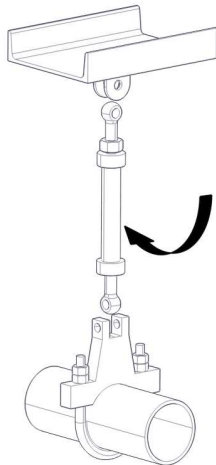
Weld the beam attachment in the right place following the engineering drawings.

Before assembling the tube and rods, shorten slightly the length of the extension tube.

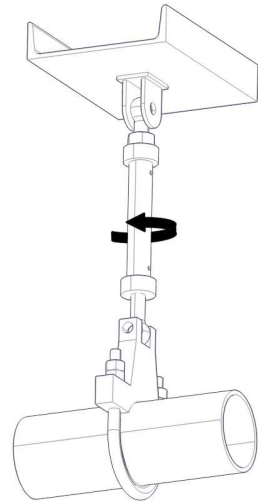


:

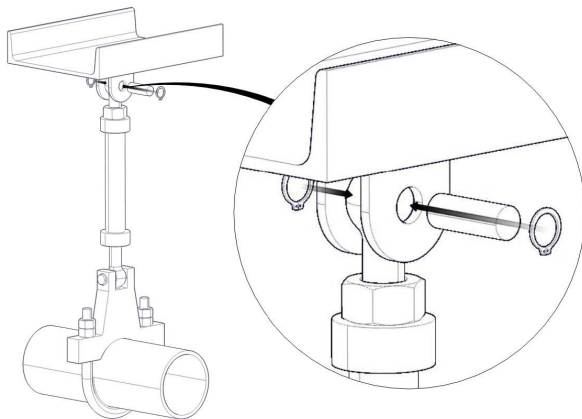
0	09/04/12	INFORMATION	JCC	JMD
REV.	DATE	EDITED FOR	DRAW	CHECK



Assemble the extension tube set.

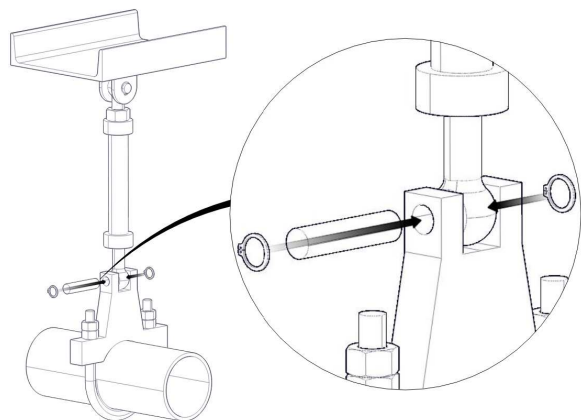


And adjust the length using the extension tube.

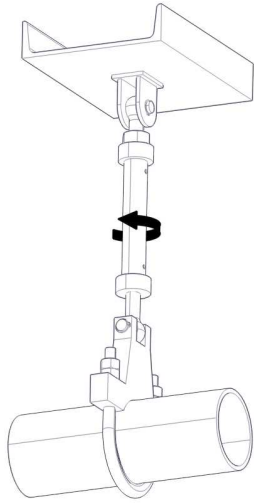


Once the holes are concentric, insert the upper pin and washers.

Do the same with the lower pin.

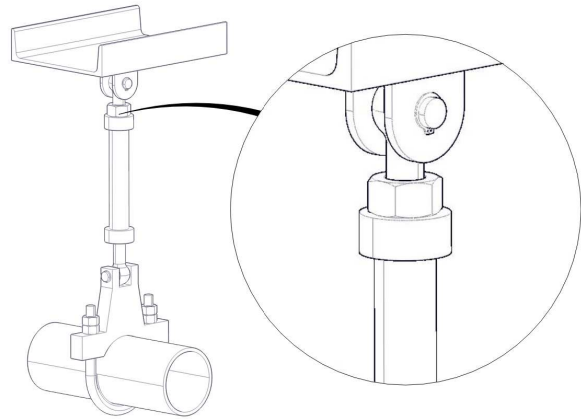


0	09/04/12	INFORMATION	JCC	JMD	
REV.	DATE	EDITED FOR	DRAW	CHECK	



Tense the extension tube.

Screw tightly the check nut.



0	09/04/12	INFORMATION	JCC	JMD
REV.	DATE	EDITED FOR	DRAW	CHECK